

UNCONTROLLED COPY

STATUS

APPROVED DRAWING

UNLESS OTHERWISE STATED

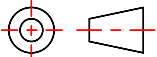
ALL DIMENSIONS IN mm

DO NOT SCALE

LINEAR TOLERANCE

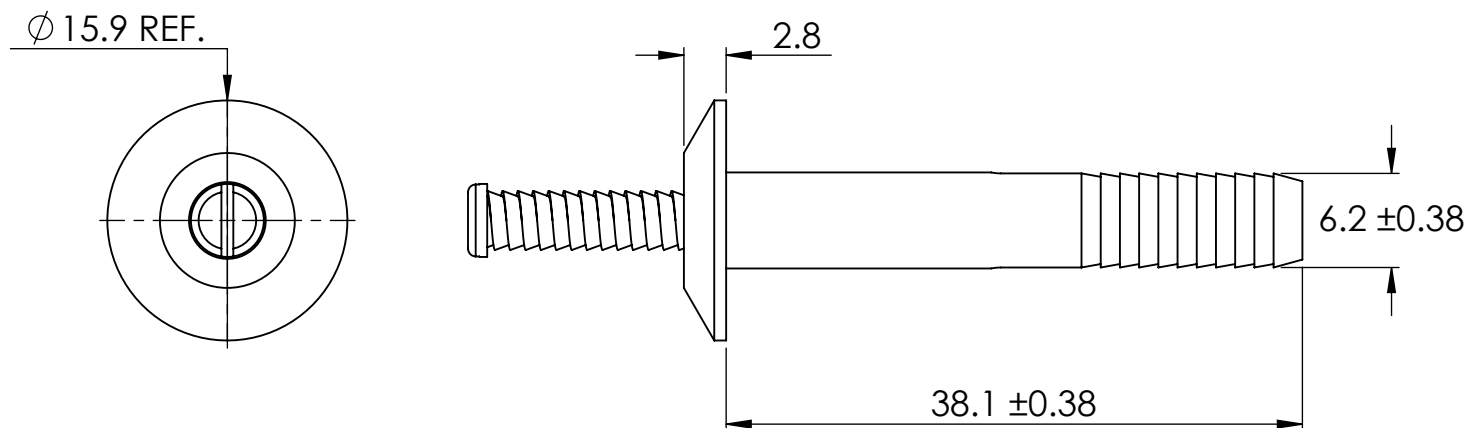
THIRD ANGLE PROJECTION

SIZE	(0)	(0.0)	(0.00)
0-10mm	±0.5	±0.15	±0.10
>10-30	±0.5	±0.20	±0.15
>30-50	±0.5	±0.30	±0.20
>50-100	±0.8	±0.50	±0.25
>100-200	±1.5	±0.80	±0.40
>200-300	±2.0	±1.20	±0.80
>300-500	±3.0	±2.00	±1.00
>500	±5.0	±3.00	±1.50


ANGULAR TOLERANCE ±0.5 DEGREES
UNSPECIFIED RADII 0.25mm
DRAFT ANGLE 0.5 DEGREES
DIMENSIONS IN BRACKETS [] ARE IN INCHES FOR REFERENCE ONLY

CREATE DATE	24.01.2024	MATERIAL	NYLON 6/6
ITEM CODE	10308851	COLOUR	-
LEGACY NUMBER	61AST25150	FINISH	

TITLE:	SCREW IN RIVET		
DWG. No.	10308851	SCALE	2:1
		SHEET	1 of 1
		ISSUE	1

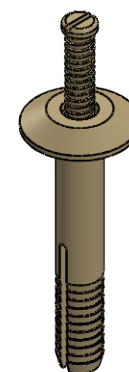


NOTES:

HEAD STYLE : TRUSS

DRIVE PIN : ZINC PLATED STEEL

ANCHOR RIVET : HIGH IMPACT MODIFIED
 NYLON TYPE 6/6



1:1